



Florida Department of Transportation
DISTRICT SIX CONSTRUCTION
Miami-Dade & Monroe counties



State Road (SR) 25/US 27/Okeechobee Road Corridor Wide Construction Update

Below is a list of ongoing construction activities and lane closure information for each project segment.

ONGOING CONSTRUCTION ACTIVITIES

Segment One: From the Broward County Line to west of Florida's Turnpike

- Performing drainage work along:
 - Frontage Rd
- Installing: grass along the canal, light bases and poles along Okeechobee Rd, Intelligent Transportation System conduits along northbound Okeechobee Rd, and fencing along northbound Okeechobee Rd
- Performing and paving roadway widening along Okeechobee Rd and Frontage Rd
- Placing concrete pavement at various intersections:
 - Krome Ave
 - NW 154 St
- Applying the final surface treatment and smoothing the completed concrete pavement at the intersections of:
 - Okeechobee Rd and Krome Ave
 - Okeechobee Rd and NW 154 St
- Reconstructing the curve along southbound Okeechobee Road. Demolition activities are underway

General Lane Closures

- Continuous single lane closure along Okeechobee Rd inside lane from the Broward County Ln to north of NW 154 St
- Nighttime construction activities are taking place from 6 p.m. to 5:30 a.m.
- Temporary single lane closures south of NW 154 St, in both directions, between the nonpeak hours of 9 a.m. and 3:30 p.m.
- Temporary shoulder closures along SR 25/US 27/Okeechobee Rd, in both directions, from 8 a.m. to 5 p.m.
- Temporary detours along Frontage Road during non-peak hours

Segment Two: From east of NW 107 Avenue to east of NW 116 Way

- Performing roadway widening and drainage installation work along Okeechobee Rd,

NW 116 Way/Hialeah Gardens Blvd, NW S River Dr and Frontage Rd

- Installing the following:
 - Sewer pipes
 - Bridge walls
 - Sidewalk adjustments along Hialeah Gardens Blvd
 - Signalization work
 - Intelligent Transportation Systems between Okeechobee and Frontage Rd
- Paving the road in preparation for an upcoming traffic shift along NW 116 Way/Hialeah Gardens Blvd
- Pile driving operations and bridge construction at:
 - Hialeah Gardens Blvd just north of Frontage Road

General Lane Closures

- A single lane closure along NW 116 Way from Frontage Rd to W 68 St, in both the northbound and southbound direction.
- A single lane closure along Okeechobee Rd from NW 92 Ave to NW 107 Ave, in both the northbound and southbound direction.
- Traffic shift for all southbound lanes at the NW 116 Way Bridge. Travel lanes are reduced to two lanes in each direction along the bridge between Okeechobee Road and NW South River Drive.
- Traffic shift for all northbound lanes along Okeechobee Rd from NW 92 Ave to NW 99 Ave. Travel lanes are reduced to two lanes in the northbound direction.

Closures will take place Monday through Saturday during the following hours:

- 9 p.m. to 5:30 a.m. on weekdays
- 11 p.m. to 7:30 a.m. on weekends

PLEASE NOTE THAT SCHEDULES MAY CHANGE DUE TO WEATHER OR UNEXPECTED CONDITIONS.

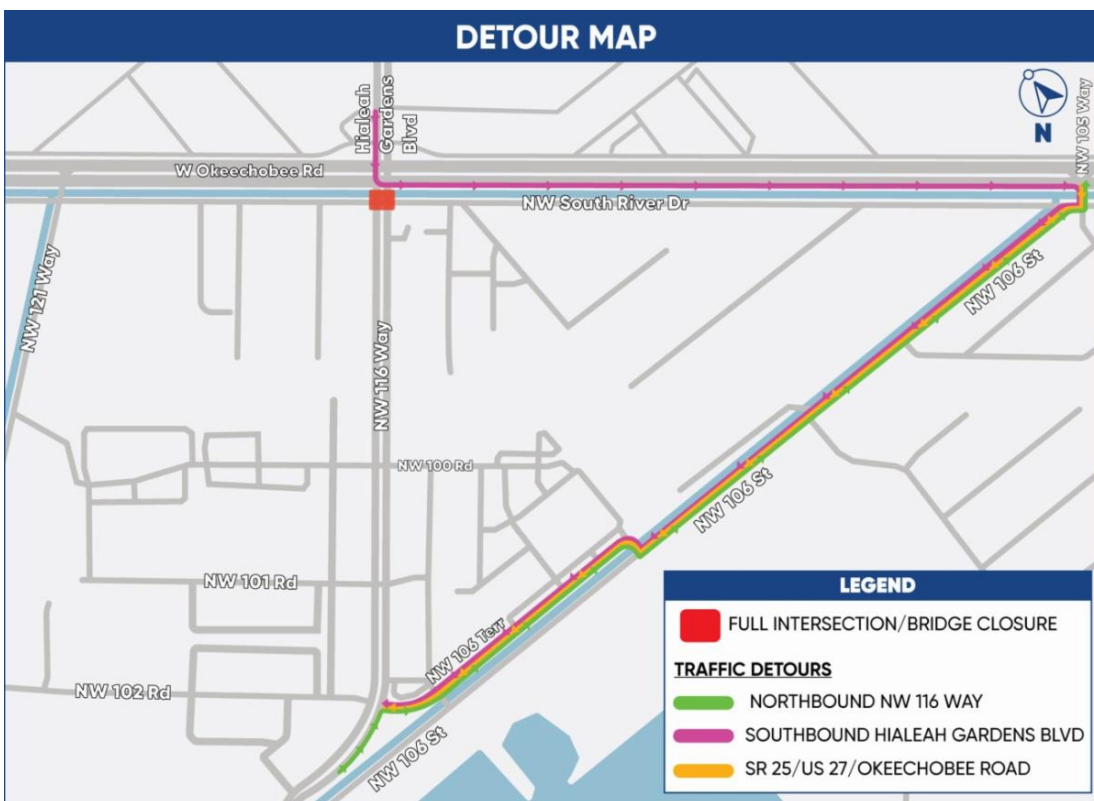
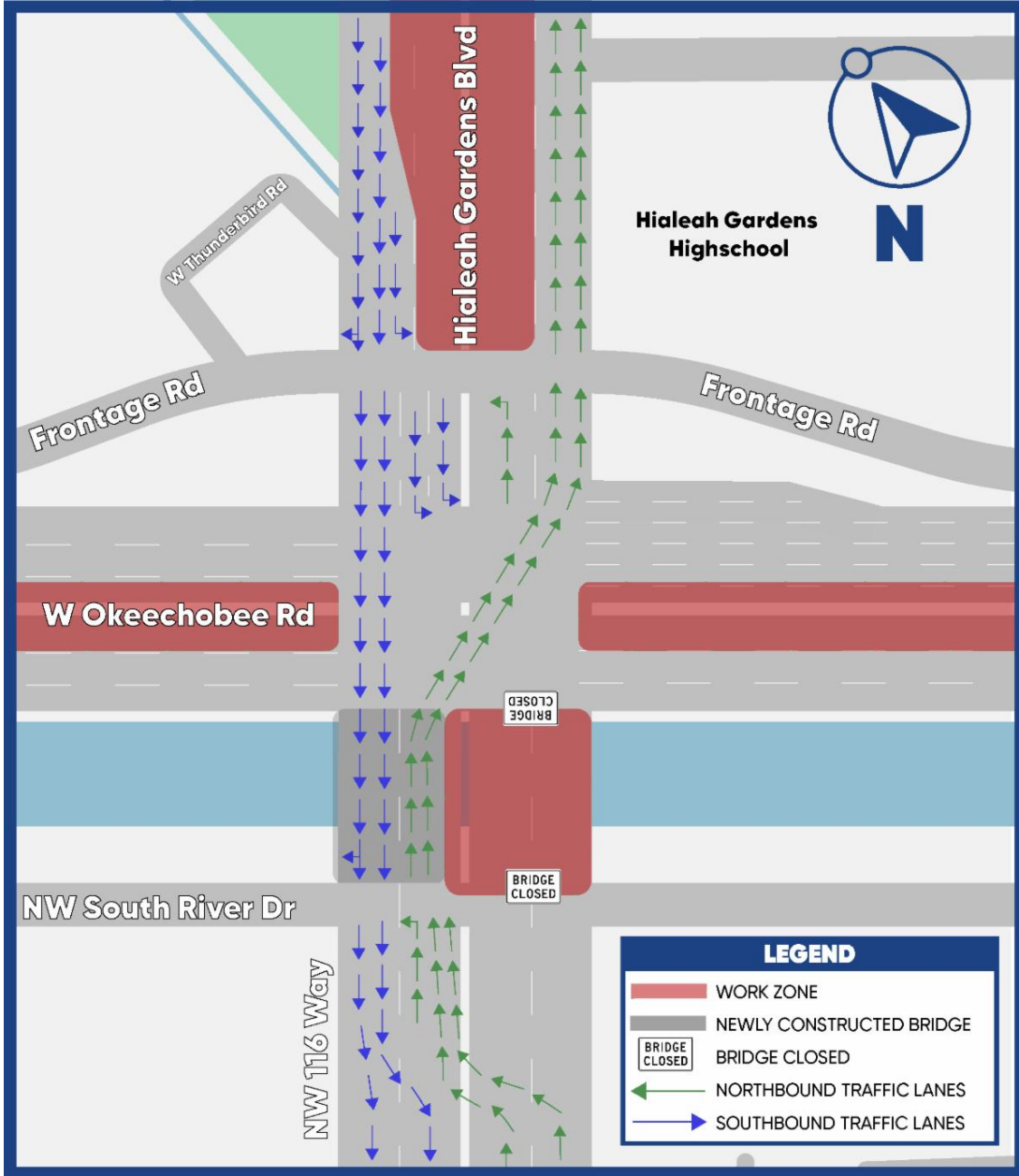
UPCOMING TRAFFIC PATTERNS AND LANE CLOSURES

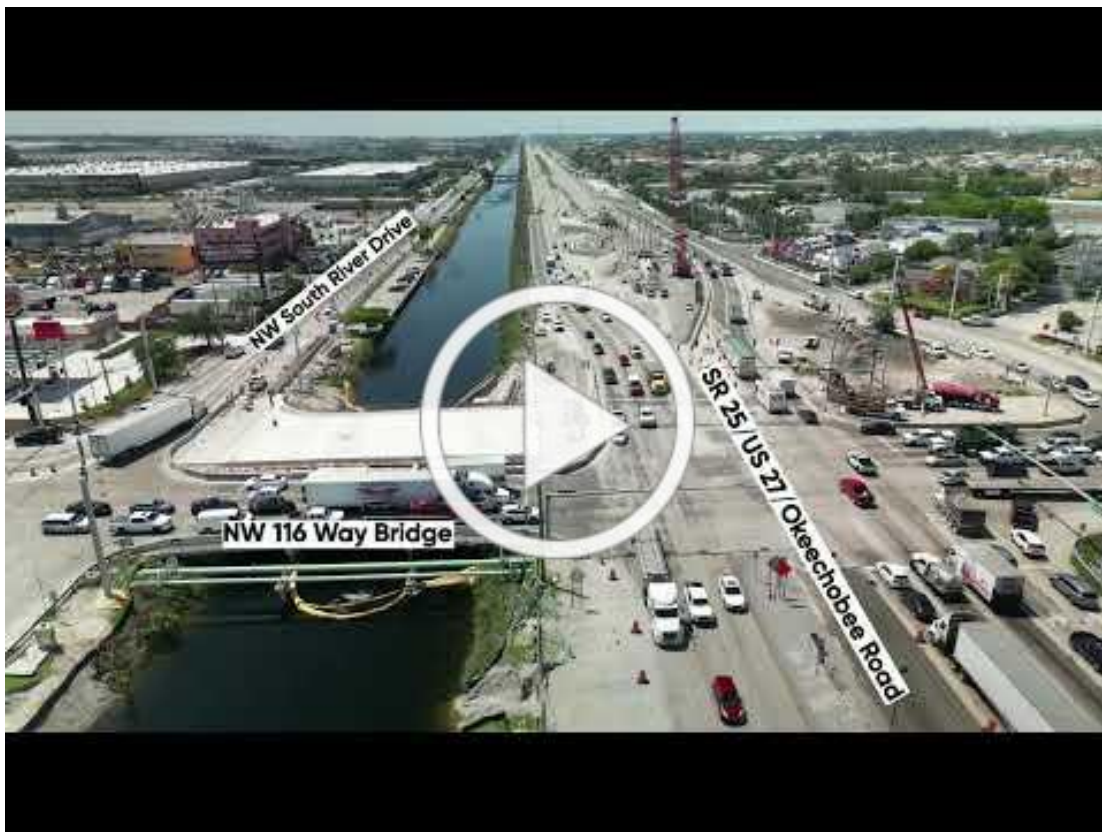
Southbound Okeechobee Road at the NW 154 Street intersection

- On Monday, May 22, 2023, the southbound lanes along Okeechobee Road at the NW 154 Street intersection will be placed at the final alignment.

NW 116 Way Bridge, Okeechobee Rd and NW South River Drive

- On Monday, May 22, 2023, all travel lanes along the NW 116 Way bridge, between Okeechobee Road and NW South River Drive, will be shifted west while the contractor begins the demolition and reconstruction efforts on the east side of the bridge. Two travel lanes will be maintained in each direction. This shift will be implemented 24 hours, 7 days a week for approximately six months.
- In order to safely implement the traffic shift, the bridge will be fully closed from 9 p.m. on Friday, May 19 to 5 a.m. on Monday, May 22, 2023.





[PLAN YOUR COMMUTE](#)

View the corridor wide traffic patterns and lane closures by clicking below:

[Interactive Online Map](#)

[FOR MORE INFORMATION](#)

Contact Senior Community Outreach Specialist Maria Alzate at Maria@iscprgroup.com or at (305) 560-8218.

Drivers are encouraged to log onto www.fl511.com to get real-time traffic and lane closure information.

[Corridor Wide Website](#)



Florida Department of Transportation, District Six | 1000 N.W. 111 Avenue, Miami, FL 33172

[Unsubscribe monica@iscprgroup.com](mailto:monica@iscprgroup.com)

[Constant Contact Data Notice](#)

Sent by maria@iscprgroup.com